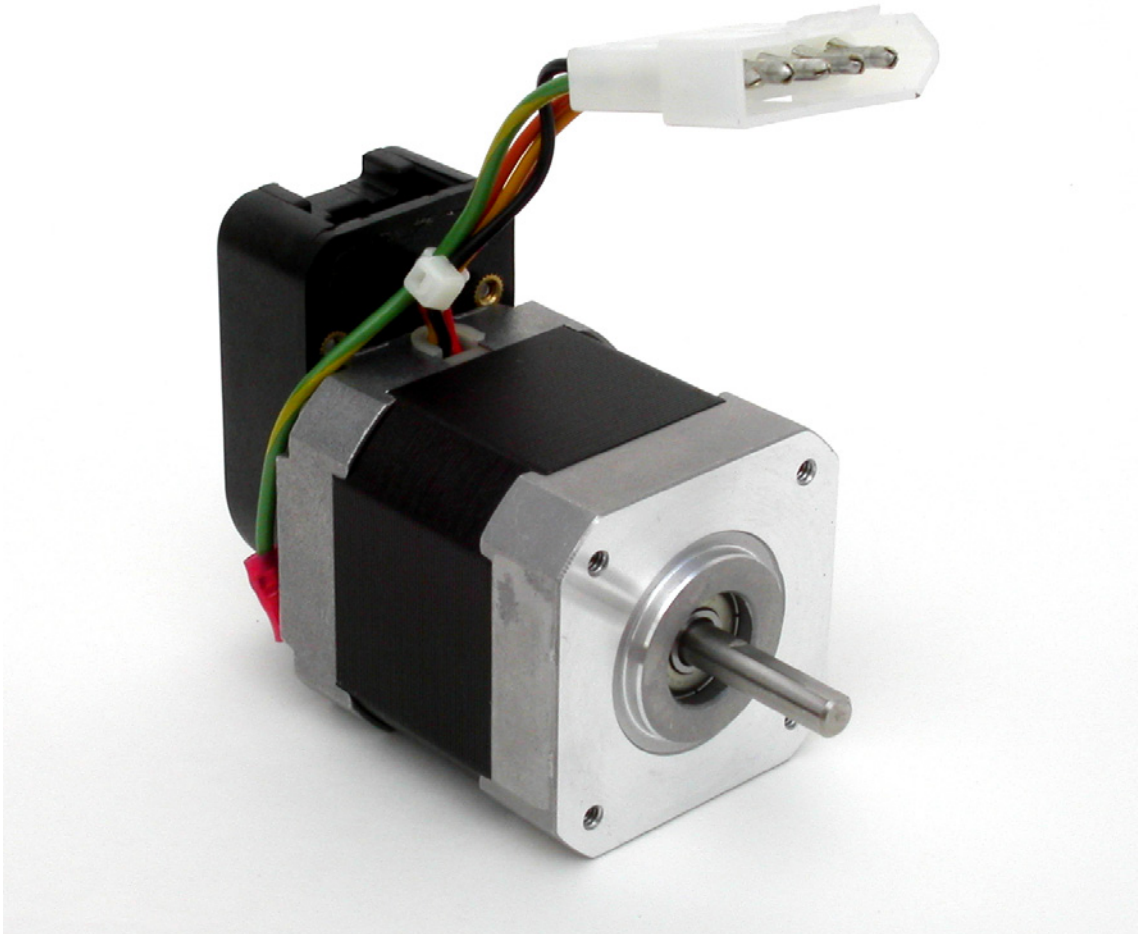


17 M-Grade Motor Series Datasheet



QuickSilver Controls, Inc.
www.QuickSilverControls.com

General Motor specifications

Note: Motor specifications are only true when the M-Grade Motors are used in conjunction with QuickSilver's Controller / Driver Systems such as the SilverNugget™ and the SilverDust™ .

Specifications	17-1	17-3	17H-1	17H-3
Maximum Speed (RPM)	2500	2500	4000	4000
Torque at Optimal Speed (oz-in)*	12	19	16	30
Continuous Stall Torque (oz-in)*	21	36	23	43
Peak Power (Mech. Watts)	16	24	34	69
Rotor Inertia (oz-in ²)	0.19	0.37	0.19	0.37

Part Number:

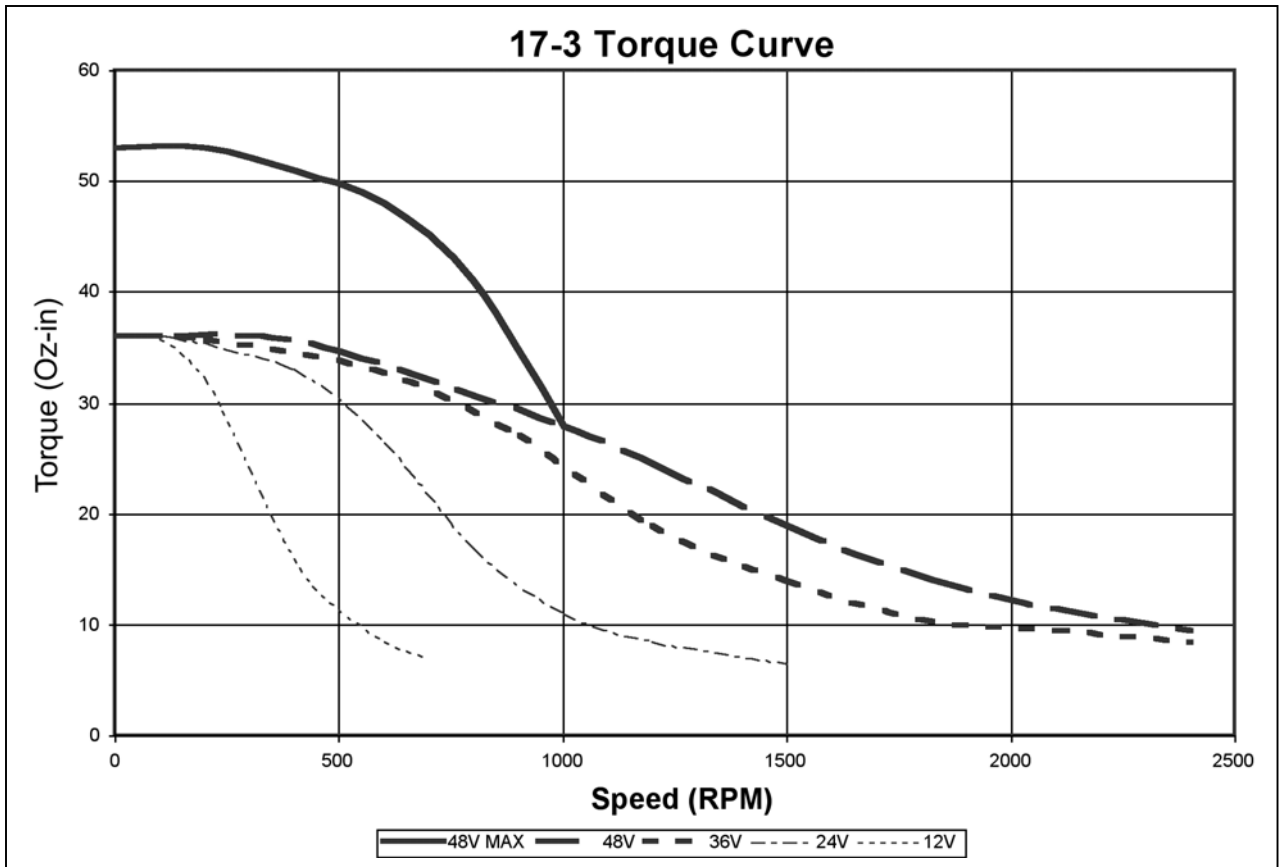
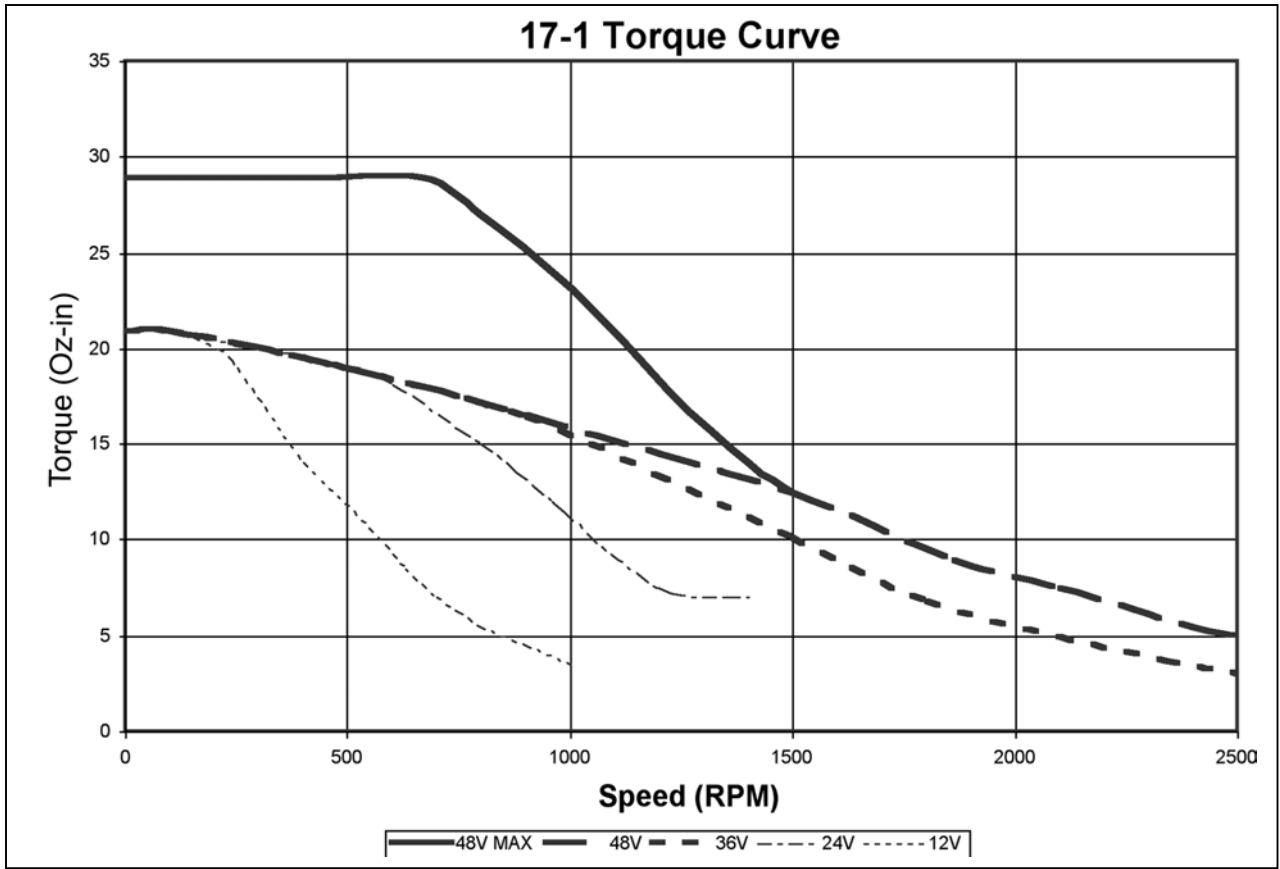
Referred As:

M17-1-0B-0BB	→	17-1
M17-3-0B-0BB	→	17-3
M17H-1-0B-0BB	→	17H-1
M17H-3-0B-0BB	→	17H-3

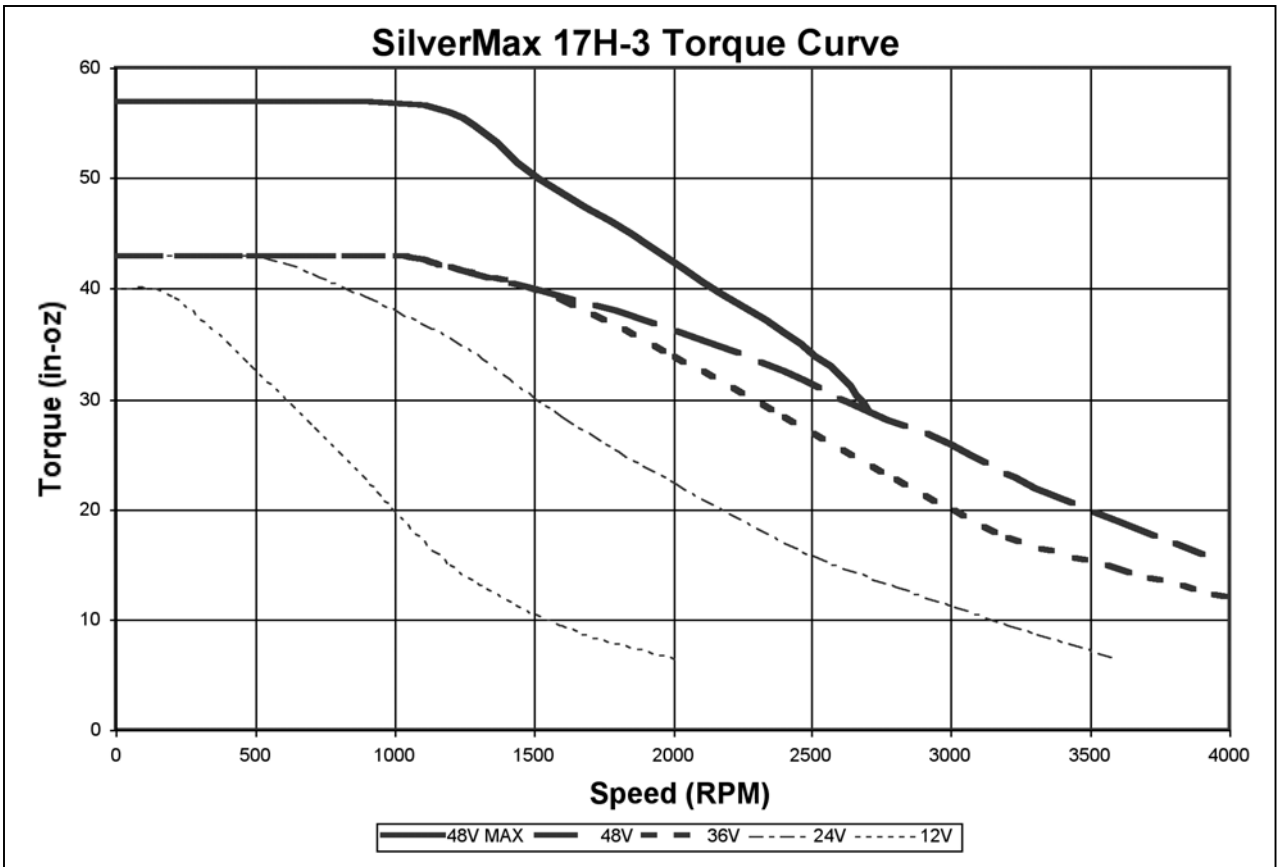
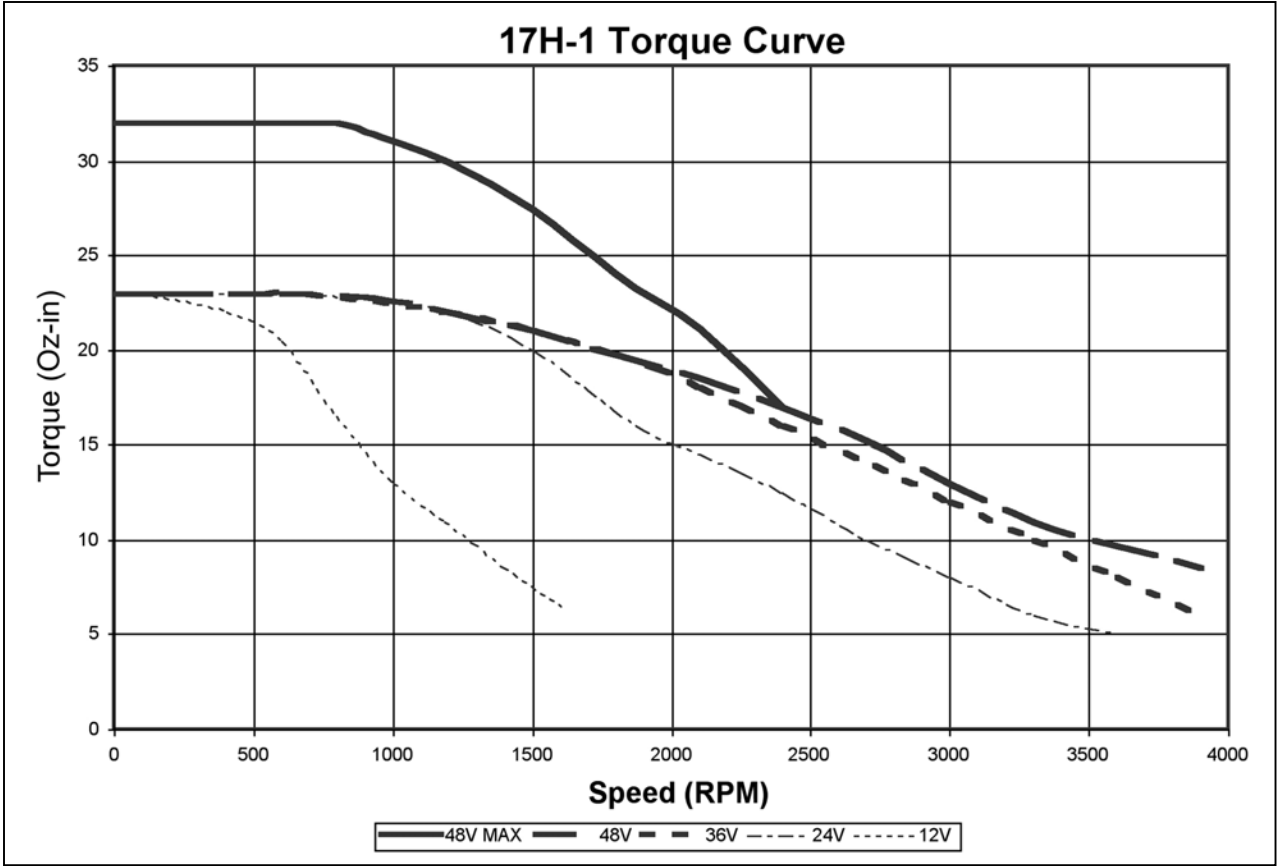
Torque Curves

Note: These torque curves are only true when the M-Grade Motors are used in conjunction with QuickSilver's Controller / Driver Systems such as the SilverNugget™ and the SilverDust™ .

Note: 48V Max is maximum torque (150% torque) set at the specified voltage.



Note: 48V Max is maximum torque (150% torque) set at the specified voltage.



Encoder Specifications (All M-Grade NEMA 17 Frame Motors)

Encoder Count Per Revolution: 4000

Index Pulse: 1

Motor Mechanical Specifications

