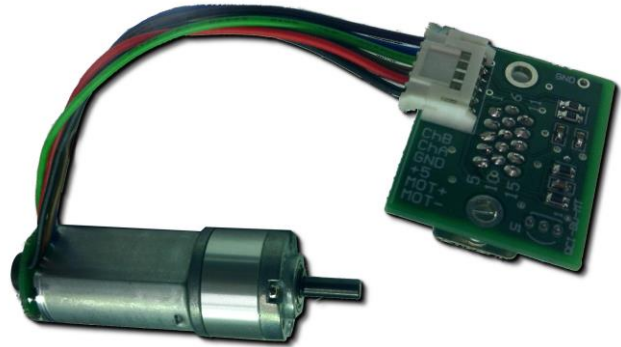


## Transmotec DC motors with Encoder Feedback

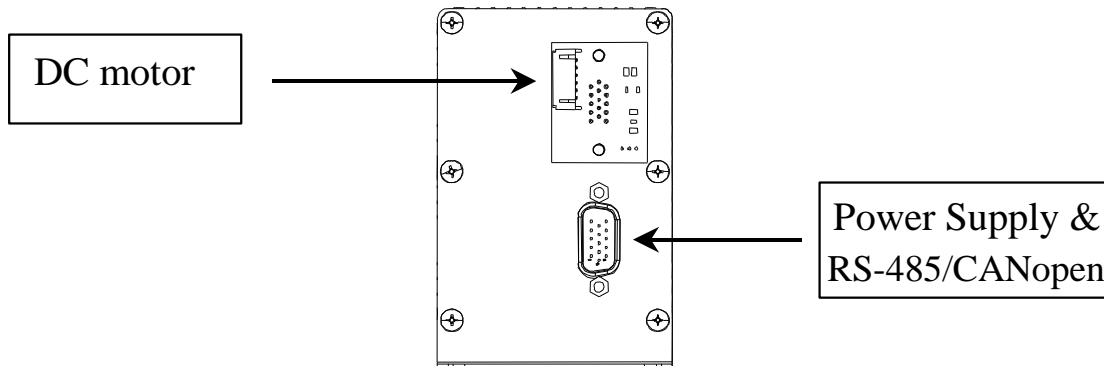
Transmotec provides brushed DC motors in various sizes for a wide range of applications. These motors can be ordered with an encoder to optimize their performance with the SilverSterling™ S2 controller family.

The QCI-BO-MT Transmotec breakout (shown on the right) is recommended for direct connectivity between the motor and controller.

Refer to Technical Document 075 for breakout details.



### How to Use



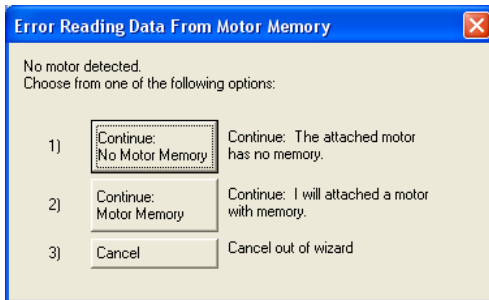
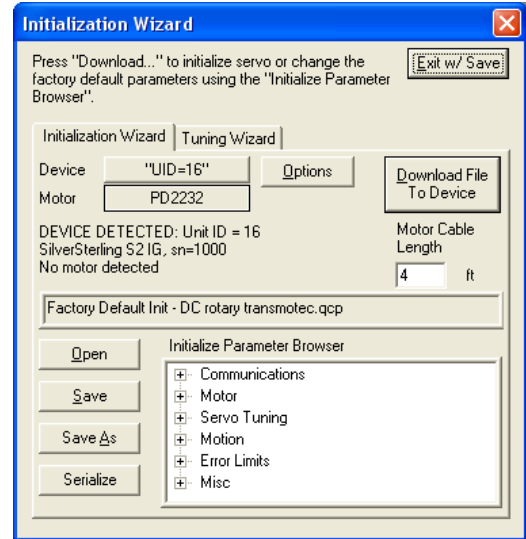
QCI-S2-IG with QCI-BO-MT

The picture above shows a SilverSterling S2-IG Motor I/F port interfacing with a QCI-BO-MT. Transmotec DC motors with encoder option plug directly into the 6-pin connector. Power, communications and I/O are brought out through the DB15HD SIP port.

### Initialization

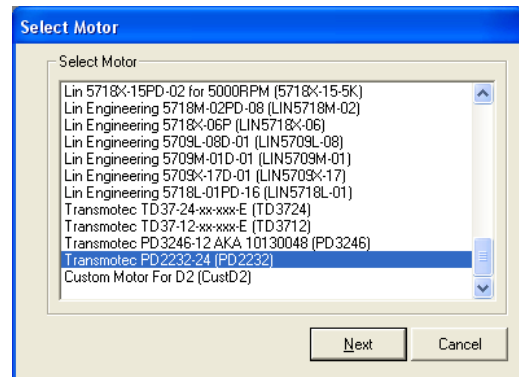
Do not connect the motor until the controller is initialized for the specific motor. A special file for your DC motor is required. Contact Support.

1. Open the Initialization Wizard under Tools
2. Click the *Open* button
3. Browse for the *Factory Default Init - Transmotec DC Motor.qcp* file included in this application note.
4. Enter the motor cable length
5. Click the *Download File to Device* button



6. Select *Continue: No Motor Memory*.

7. Select Motor Type and click *Next*.
8. Open Control Panel under the Tools menu to send test moves and jog the motor.



Refer to datasheet QCI-DS026 for more information on the SilverSterling. Refer to technical document QCI-TD072 for details on setting up a SilverSterling.

For more information concerning Transmotec products, please contact Transmotec.